

# Kramer Angus

## 16th Annual Bull & Female Sale

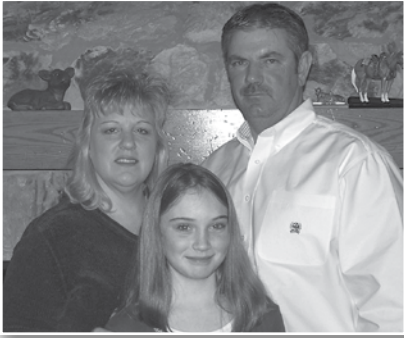


KRAMERS PLATINUM 341 - Lot 1

**Saturday • March 22, 2014 • 1 p.m.**

**At the farm located 4 miles north of Farina, Illinois,  
on Route 37, then 1 mile west.**

*Registered Angus Since 1960*



MARVIN, VICKEY AND MORGAN KRAMER

# Kramer Angus

Marvin, Vickey & Morgan Kramer  
RR 2 • Box 28-1 • Farina, IL 62837  
www.kramerangus.com • mvkramer@wildblue.net  
Marvin • (618) 267-3884  
Craig Crutcher • (815) 289-2855



EUGENE AND MARILYN KRAMER -  
Founders of Kramer Angus

Welcome to our 16th Annual Bull & Female sale.

Thank you for taking a look at this sale offering and our program.

We make our living off these cattle and a small farming operation; therefore they need to perform for us and our customers. We focus on producing problem free, high quality cattle. Started in 1960 by Eugene and Marilyn Kramer, we have been performance-testing for over 45 years and keeping AHIR records for over 35 years. The cattle in this sale are the result of these efforts.

New this year, all bulls have 50K DNA results, thus giving a much higher accuracy to their EPDs and many more measureable traits. This gives buyers more confidence in what they are getting.

This is the best set of bulls we have ever offered. They were started on a roughage creep and developed on a low energy, high fiber diet fortified with Vita Ferm Concept AID mineral, designed for a 3 pound gain and still many of them overachieved. You will find them to be muscular, long-bodied, sound structured and well-developed.

The heifers are top-notch, both on paper and in person. Numerous heifers purchased in past sales have gone on to produce \$3,000 to \$7,000 animals for their new owners. Help yourself here!

If we can be of further assistance please do not hesitate to call.

Marvin

#### SALE DAY PHONES:

(618) 245-6307  
Marvin's Cell (618) 267-3884  
Vickey's Cell (618) 267-0206  
Tom Burke Cell (816) 853-2697

**AUCTIONEER:** Cody Lauderman

#### SALE MANAGER:

American Angus Hall of Fame ..... (816) 532-0811  
Tom Burke Kurt Schaff Jeremy Haag  
(816) 853-2697 (816) 520-6447 (816) 516-1309

#### RINGMEN:

Jerry Cassady, American Angus Association, (217) 390-6603  
Kerry Johnston, Ring Service & Sale Consultant, (217) 452-3051  
Bruce Kiesewetter, Livestock Plus, (319) 750-4555  
Dan Naughton, Special Assignment  
Trent Smith, Special Assignment  
Buyers unable to attend the sale may send their bids to the Sale Manager, Regional Manager, Field Representatives or Auctioneer.

#### DIRECTIONS TO THE SALE SITE:

From I-57, Farina Exit: Rt. 185 East, 1 mile. Rt. 37 North, 4 miles to LaCleda. 1 mile west. Watch for Kramer sale signs.  
From I-70, Altamont Exit: Farina-Altamont blacktop south of Altamont, 10 miles. 3 miles east. Watch for Kramer sale signs.

#### ACCOMMODATIONS:

**Comfort Inn Suites**  
1310 W. Fayette Ave., Effingham, IL  
(217) 342-2051

#### Super 8

3091 E. Mill Dr., Altamont, IL  
(618) 483-6300

#### TERMS AND CONDITIONS:

Cattle will sell under the suggested Terms and Conditions of the American Angus Association ([http://www.angus.org/Pub/suggested\\_sale\\_terms.pdf](http://www.angus.org/Pub/suggested_sale_terms.pdf)). Retaining one-third interest in all bulls unless otherwise listed.

#### ANNOUNCEMENTS:

Announcements made sale day take precedence over the information printed in this sale book. Supplemental sheets with updated yearling and carcass data will be available sale day. All lots are AM, NH, CA, M1, D2 and DD free except where otherwise listed.

#### HERD HEALTH:

All cattle will be accompanied by proper health certificates for immediate shipment. Heifers are calfhood vaccinated.

#### DELIVERY:

Delivery arrangements & housing of bulls can be made; check with us.

**Complimentary lunch served, featuring Elaine Stuckemeyer's homemade pies.**

#### ABOUT THE DATA

Birth Wt.: Actual weight at the time of birth.  
205 Wt.: Actual weaning weight adjusted to 205 days by AHIR.  
365 Wt.: Actual weight adjusted to 365 days by AHIR.  
365 Adj. SC: Scrotal circumference adjusted to 365 days by AHIR.  
ADG: Average Daily Gain based on 120 days on test.  
EPDs on the bulls that sell are enhanced by genomic results generated through Igenity.

#### WE ARE OFFERING THESE OPTIONS TO BULL BUYERS

- Buy your bull during the auction, pay in full on sale day, take the bull home within 3 days and receive a \$25 discount on each bull you buy.
- Buy a bull during the auction, pay 1/2 down on sale day and receive free housing until April 10, 2014. The balance is due when the bull is picked up. You may want to consider purchasing insurance on these bulls.
- Volume Discount: Purchase 3 bulls or more and receive a \$100 discount on each bull.
- Repeat buyers in last 5 years take an additional \$25 off each bull you purchase through auction.

**EPDs current as of February 17, 2014.**

# KRAMER ANGUS BULLS



KRAMERS PLATINUM 341 - Lot 1



SAV POTENTIAL 0205 - The sire of Lots 1, 2 and 3.

## 1 Kramers Platinum 341 [DDP]

Birth Date: 2-9-2013 Bull 17668329 Tattoo: 341

SAV Pioneer 7301 #SAV Final Answer 0035 [RDF]  
 SAV Potential 0205 SAV Blackbird 5297  
 +SAV Elba 7021 #+SAV 004 Density 4336  
**HD 50K** +SAV Elba 2425  
 #Bon View New Design 878 #B/R New Design 036  
 #KF Evergreen Erica 1514 Bon View Gammer 85  
 KF Evergreen Erica 1300 +Clearwater Paf Seville 1977  
 KF Evergreen Erica 879

CED	BEPD	WEPD	YEPD	SC	DOC	MILK		
+2	+2.3	+49	+91	+59	+15	+28		
BW	205 wt.	365 wt.	MARB	RE	\$W	\$B	365 Adj SC	ADG
80	773	1362	+37	+48	+37.31	+73.96	38.66	4.09

Regarded as the most complete herd sire prospect ever produced at Kramer Angus, this outstanding bull is by the \$180,000 Genex/CRI sire, SAV Potential 0205, from a productive Pathfinder Dam considered the best in the Kramer herd with a progeny weaning ratio of 104 on six calves and a progeny yearling ratio of 104 on two head. This bull has an individual weaning ratio of 111 and an individual yearling ratio of 103, backed by generations of the timeless Evergreen Erica family.



KRAMERS FACTORY DIRECT 211 - This featured Lot 1 bull of the 2013 Kramer Sale is from the Evergreen Erica family.

## 2 Kramers Potential 314 [DDP]

Birth Date: 1-10-2013 Bull 17618112 Tattoo: 314

SAV Pioneer 7301 #SAV Final Answer 0035 [RDF]  
 SAV Potential 0205 SAV Blackbird 5297  
 +SAV Elba 7021 #+SAV 004 Density 4336  
**HD 50K** +SAV Elba 2425  
 +SAV 004 Traveler 4464 #SAV 8180 Traveler 004 [RDF]  
 KF Evergreen Erica 1537 SAV Elba 1094  
 #KF Evergreen Erica 1165 Bushs Deadline  
 KF Evergreen Erica 1018

CED	BEPD	WEPD	YEPD	SC	DOC	MILK		
+5	+2.4	+56	+107	+1.01	+14	+30		
BW	205 wt.	365 wt.	MARB	RE	\$W	\$B	365 Adj SC	ADG
82	764	1498	-.04	+57	+40.87	+65.87	42.70	5.08

A maternal brother to Kramers Factor 215 who was a popular member of the 2013 Kramer National Western Second-Prize Pen of Bulls. This bull has individual weaning and yearling ratios of 110 and 114, respectively, sired by the great breeding bull, SAV Potential 0205, the \$180,000 leadoff bull of the 2011 Schaff Angus Valley Sale. This high-maternal and balanced performance bull is described by Marvin Kramer as big, stout and awesomely thick-muscled. The grandam is a Pathfinder Dam.



KRAMERS FACTOR 215 - This featured Lot 2 bull of the 2013 Kramer Sale is a maternal brother to Lot 2.

# KRAMER ANGUS BULLS



KRAMERS POTENTIAL 311 - Lot 3

Described as a big-bodied, super easy doing herd sire prospect, this promising bull by SAV Potential 0205 combines an individual birth ratio of 99 with individual weaning and yearling ratios of 104 and 103, respectively. This bull is a natural calf from a Forever Lady dam backed by generations of top females.



KRAMERS TOP LINE ROMEO 2011 - Maternal brother to Lot 4.

## 3 Kramers Potential 311

Birth Date: 1-8-2013

Bull 17618113

Tattoo: 311

SAV Pioneer 7301  
SAV Potential 0205  
+SAV Elba 7021  
**HD 50K**  
#Connealy Forefront  
+KF Forever Lady 1403  
Birks Forever Lady 370

#SAV Final Answer 0035 [RDF]  
SAV Blackbird 5297  
#+SAV 004 Density 4336  
+SAV Elba 2425  
#Connealy Frontline  
Eileen Heartland Conanga6443  
#VDAR New Trend 315  
B&M Forever Lady 294

CED	BEPD	WEPD	YEPD	SC	DOC	MILK		
+2	+2.6	+50	+98	+35	+23	+23		
BW	205 wt.	365 wt.	MARB	RE	\$W	\$B	365 Adj SC	ADG
78	724	1353	+58	+42	+31.80	+84.06	38.15	4.38

## 4 Kramers One Direction 306

Birth Date: 1-4-2013

Bull +17668328

Tattoo: 306

#SAV Final Answer 0035 [RDF]  
Vin-Mar O'Reilly Factor  
#Vin-Mar Edella 2827  
**HD 50K**  
#+SAV Bismarck 5682 [RDF]  
+Top Line Lady 9111  
OBAR Gambles Lady 1056

#Sitz Traveler 8180  
SAV Emulous 8145  
+Circle A 216 LTD 9374  
RR Edella Pursuit 5827  
#+GAR Grid Maker  
SAV Abigale 0451  
#BC Marathon 7022  
+Gambles Miss Famous 621

CED	BEPD	WEPD	YEPD	SC	DOC	MILK		
+10	+3	+58	+107	+53	+16	+26		
BW	205 wt.	365 wt.	MARB	RE	\$W	\$B	365 Adj SC	ADG
78	730	1261	+61	+65	+49.74	+87.17	42.01	3.71



KRAMERS ONE DIRECTION 306 - Lot 4

A son of the 2011 National Western Reserve Grand Champion Female who records a progeny birth ratio of 81 coupled with progeny weaning and yearling ratios of 108 and 107, respectively, on her first natural calf.

This thick-topped, smooth-made bull is a maternal brother to Kramers Top Line Romeo 2011 who was Grand Champion of the 2013 Illinois Junior Preview, Reserve Grand Champion of the 2013 All-American Junior Show, Reserve Senior Bull Calf Champion of the 2013 All-American and Senior Bull Calf Champion of both the 2014 National Western and the 2014 Fort Worth Stock Show.



TOP LINE LADY 9111 - The dam of Lot 4.

# KRAMER ANGUS BULLS



VIN-MAR O'REILLY FACTOR - The sire of Lots 4 and 5.

## 5 *Kramers Factor 034* [DDP]

Birth Date: 1-5-2013 Bull 17648141 Tattoo: 308

#SAV Final Answer 0035 [RDF]  
Vin-Mar O'Reilly Factor  
#Vin-Mar Edella 2827

HD 50K

Kramers Network 802

Kramers Barbara Beauty 034

#Kramers Barbara Beauty 1516

#Sitz Traveler 8180  
SAV Emulous 8145  
+Circle A 216 LTD 9374  
RR Edella Pursuit 5827  
#SAV Net Worth 4200  
KF Evergreen Erica 1359  
#+Boyd New Day 8005  
#KF Barbara Beauty 1120

CED	BEPD	WEPD	YEPD	SC	DOC	MILK		
+13	-2	+65	+112	+1.17	+10	+27		
BW	205 wt.	365 wt.	MARB	RE	\$W	\$B	365 Adj SC	ADG
60	738	1376	+09	+35	+50.54	+62.72	42.56	4.36

One of the favorites of the calf crop, this well-built calving-ease bull is by the popular Vin-Mar O'Reilly Factor who sired the 2013 Kramer National Western second prize Pen of Bulls, as well as the reigning 2014 National Western Grand Champion Pen of Bulls.

This bull has an individual birth ratio of 79 combined with individual weaning and yearling ratios of 106 and 104, respectively, from a dam who balances a progeny birth ratio of 88 with a progeny weaning ratio of 105 on two calves, stemming from a grandam who is a second-generation Pathfinder Dam.

The dam of this bull is a maternal sister to Kramers New Biz 921 who was the top-seller of the 2010 Kramer Sale to JP Farms.

## 6 *Kramers Answer 101* [DDP]

Birth Date: 1-1-2013 Bull 17615748 Tattoo: 301

#SAV Final Answer 0035 [RDF]  
Kramers Answer 932  
Werner Empress 817

HD 50K

+LAR Image Maker 64 211U

Kramers Evergreen Erica 101

KF Evergreen Erica 1357

#Sitz Traveler 8180  
SAV Emulous 8145  
#+Woodhill Foresight  
Shermans Empress 410  
#+HA Image Maker 0415  
Eileenmere Diamond 161 LAR  
#+SAF Strategy 9015  
#KF Evergreen Erica 1165

CED	BEPD	WEPD	YEPD	SC	DOC	MILK		
+7	+1.1	+72	+116	+1.84	+19	+30		
BW	205 wt.	365 wt.	MARB	RE	\$W	\$B	365 Adj SC	ADG
68	833	1502	+11	+28	+58.82	+52.03	42.94	4.47

This high-performing, calving-ease bull features excellent thickness and gain ability with an individual birth ratio of 95 combined with individual weaning and yearling ratios of 120 and 114, respectively.

This son of Kramers Answer 932 was produced as the first calf from a dam by the Kramer sire, LAR Image Maker 64 211U.

## 7 *Kramers Answer 315* [DDP]

Birth Date: 1-10-2013 Bull 17615740 Tattoo: 315

#SAV Final Answer 0035 [RDF]  
Kramers Answer 932  
Werner Empress 817

HD 50K

+LAR Image Maker 64 211U

Kramers Forever Lady 083

+Kramers Forever Lady 830

#Sitz Traveler 8180  
SAV Emulous 8145  
#+Woodhill Foresight  
Shermans Empress 410  
#+HA Image Maker 0415  
Eileenmere Diamond 161 LAR  
#SAV Net Worth 4200  
+Birks Forever Lady 110

CED	BEPD	WEPD	YEPD	SC	DOC	MILK		
+1	+3.8	+75	+119	+1.75	+23	+31		
BW	205 wt.	365 wt.	MARB	RE	\$W	\$B	365 Adj SC	ADG
79	819	1448	+48	+47	+53.43	+76.44	42.73	4.36

A top-performing son of Kramers Answer 932 with an individual weaning ratio of 118 and an individual yearling ratio of 110, as the first calf from a dam by LAR Image Maker 64 211U.

This bull is a three-quarter brother to Lot 6 and stems from the noted Kramer foundation female, Birks Forever Lady 110.



CONNELLY CONSENSUS 7229 - The sire of Lots 8, 9, 28, 29 and 30.

## 8 *Kramers Consensus 332*

Birth Date: 1-29-2013 Bull 17691303 Tattoo: 332

Connealy Consensus  
Connealy Consensus 7229  
Blue Lilly of Conanga 16

HD 50K

KF New Design 464

Kramers Forever Lady 870

Birks Forever Lady 370

#KMK Alliance 6595 187  
Blinda of Conanga 004  
#Woodhill Admiral 77K  
Blue Cash of Conanga 6020  
#Bon View New Design 878  
#KF Evergreen Erica 1252  
#VDAR New Trend 315  
B&M Forever Lady 294

CED	BEPD	WEPD	YEPD	SC	DOC	MILK		
+7	+2.7	+54	+93	+84	+9	+28		
BW	205 wt.	365 wt.	MARB	RE	\$W	\$B	365 Adj SC	ADG
85	755	1408	+58	+37	+33.25	+84.34	38.34	4.47

An attractive, thick-muscled bull with an excellent disposition, coupled with individual weaning and yearling ratios of 109 and 107, respectively.

This son of the \$210,000 record-selling Connealy Consensus 7229 is from a dam with a progeny weaning ratio of 108 on two calves, backed by the Forever Lady family.

## 9 *Kramers Consensus 333*

Birth Date: 2-1-2013 Bull 17615749 Tattoo: 333

Connealy Consensus  
Connealy Consensus 7229  
Blue Lilly of Conanga 16

HD 50K

+LAR Image Maker 64 211U

Kramers Evergreen Erica 046

+KF Evergreen Erica 1543

#KMK Alliance 6595 187  
Blinda of Conanga 004  
#Woodhill Admiral 77K  
Blue Cash of Conanga 6020  
#+HA Image Maker 0415  
Eileenmere Diamond 161 LAR  
#+B/R New Frontier 095  
#KF Evergreen Erica 928

CED	BEPD	WEPD	YEPD	SC	DOC	MILK		
+3	+3.0	+57	+96	+1.29	+18	+29		
BW	205 wt.	365 wt.	MARB	RE	\$W	\$B	365 Adj SC	ADG
84	680	1301	+38	+69	+41.43	+91.50	41.43	4.28

An outcross prospect by the \$210,000 record-selling Connealy Consensus 7229.

This bull is from a dam with a progeny weaning ratio of 101 on two calves, sired by LAR Image Maker 64 211U, backed by the herd sire producing Evergreen Erica family.



KRAMERS ANSWER 932 - The sire of Lots 7 and 33.

# KRAMER ANGUS BULLS



KRAMERS APOLLO 317 - Lot 10



KOUPAL JUNEAU 797 - The sire of Lots 10 and 11.

## 10 *Kramers Apollo 317*

Birth Date: 1-20-2013

Bull 17668327

Tattoo: 317

#OCC Juneau 807J  
Koupal Juneau 797  
Koupals Elba 187  
**HD 50K**  
#TC Aberdeen 759  
+Kramers Evergreen Erica 1204  
#Kramers Evergreen Erica 1512

#+OCC Emblazon 854E  
OCC Dixie Erica 903E  
#OCC Glory 950G  
Beefland Elba 7119  
#CRA Bextor 872 5205 608  
#+TC Blackbird 4034  
#Ironwood New Level  
KF Evergreen Erica 1377

CED	BE PD	WE PD	YE PD	SC	DOC	MILK		
+11	-.7	+69	+121	+1.74	+31	+34		
BW	205 wt.	365 wt.	MARB	RE	\$W	\$B	365 Adj SC	ADG
64	786	1448	+.29	+.83	+58.38	+88.83	42.55	4.62

RETAINING ONE-HALF POSSESSION, NEGOTIABLE WITH THE BUYER.

This unique herd sire prospect features an elite EPD profile, coupled with depth, stoutness in an outcross pedigree.

This bull balances a modest individual birth ratio of 89 with impressive individual weaning and yearling ratios of 113 and 110, respectively, sired by the Genex/CRI sire, Koupal Juneau 797, produced as the first calf from a dam by TC Aberdeen 759.

The Pathfinder granddam has served as an embryo donor.



BELVIN TRES MARIAS PATRON 205 - The sire of Lot 12.

## 11 *Kramers Juneau 329*

Birth Date: 1-28-2013

Bull 17620709

Tattoo: 329

#OCC Juneau 807J  
Koupal Juneau 797  
Koupals Elba 187  
**HD 50K**  
#Sitz Upward 307R  
Kramers Evergreen Erica O1G  
#Kramers Evergreen Erica 1512

#+OCC Emblazon 854E  
OCC Dixie Erica 903E  
#OCC Glory 950G  
Beefland Elba 7119  
#Connealy Onward  
Sitz Henrietta Pride 81M  
#Ironwood New Level  
KF Evergreen Erica 1377

CED	BE PD	WE PD	YE PD	SC	DOC	MILK		
+8	+1.3	+70	+127	+.86	+25	+33		
BW	205 wt.	365 wt.	MARB	RE	\$W	\$B	365 Adj SC	ADG
65	715	1409	+.26	+.62	+53.18	+91.73	40.80	4.81

This outstanding bull is a three-quarter brother to Lot 10, by the Genex/CRI sire, Koupal Juneau 797, stemming from the Pathfinder Dam, Kramers Evergreen Erica 1512.

This bull combines an individual birth ratio of 86 with individual weaning and yearling ratios of 103 and 107, respectively, for an impressive EPD profile.

The dam of this bull has a progeny birth ratio of 92 combined with progeny weaning and yearling ratios of 106 and 101, respectively, on two calves.

## 12 *Kramers Outcross 343* [DDP]

Birth Date: 2-9-2013

Bull 17618167

Tattoo: 343

Alston 5384 Catriel F  
+Belvin Tres Marias Patron 205  
Tres Marias 6764 Rosanegra 5214  
**HD 50K**  
#+SAV Bismarck 5682 [RDF]  
+Kramers Evergreen Erica 611  
#KF Evergreen Erica 1252

Tres Marias 6221 Casimiro  
Tres Marias 5348 Patagonia 4850  
Tres Marias 5887 Hornero  
Tres Marias 5214 Torcaza  
#+GAR Grid Maker  
SAV Abigale 0451  
#SAF Focus of ER  
#KF Evergreen Erica 1165

CED	BE PD	WE PD	YE PD	SC	DOC	MILK		
+3	+2.0	+47	+72	-.04	-5	+14		
BW	205 wt.	365 wt.	MARB	RE	\$W	\$B	365 Adj SC	ADG
74	717	1282	+.37	+.16	+36.32	+25.24	36.19	3.91

This unique breeding bull is by the Argentine outcross bred sire, Belvin Tres Marias Patron 205. This bull has an individual weaning ratio of 103 as the first calf from a dam, by SAV Bismarck 5682, considered the best female of her calf crop in the Kramer herd.

The grandam is a second-generation Pathfinder Dam.

# KRAMER ANGUS BULLS

## 13 *Kramers Modified 2007*

Birth Date: 9-9-2012 Bull #17514609 Tattoo: 2007

#Famous 7001  
Gambles Hot Rod  
+Champion Hill Lady 703  
HD 50K  
#Rito 112 of 2536 Rito 616  
Kramers Evergreen Erica 1558  
KF Evergreen Erica 1466

#SAF Fame  
TK Karen 1369  
#Leachman Saughatchee 3000C  
+Champion Hill Lady Stone 731  
#Rito 616 of 4820 6807  
GAR Precision 2536  
#Sitz Tradition RLS 8702  
#KF Evergreen Erica 1252

GED	BEPD	WEPD	YEPD	SC	DOC	MILK		
+5	+4.2	+58	+98	+48	+1	+20		
BW	205 wt.	365 wt.	MARB	RE	\$W	\$B	365 Adj SC	ADG
72	701	1269	+31	+29	+32.65	+72.17	37.30	N/A

This thick, big-rumped son of Gambles Hot Rod is from a donor dam who sold one-half interest for \$18,000 as the all-time top-selling female at Kramer Angus in the 2008 Kramer Spring Sale to Schafer Family Angus and she has a progeny weaning ratio of 110 on two natural calves.

Maternal siblings include the \$9,500 top-selling bull of the 2010 Illinois Futurity, the \$6,000 second top-selling bull of the 2011 Kramer Spring Sale, the 2012 All-American Junior Show Grand Champion Bred-and-Owned Female and Kramers Evergreen Erica 2325, the \$15,500 second top-selling heifer of the 2013 Illinois Futurity.

## 14 *Kramers Image Maker 342*

Birth Date: 2-10-2013 Bull #17615743 Tattoo: 342

#+HA Image Maker 0415  
+LAR Image Maker 64 211U  
Eileenmere Diamond 161 LAR  
HD 50K  
#SydGen CC&7  
Kramers Lady 1597  
KF Lady 1347

#Hero 6267 of RR 2418  
HA Rito Blackcap 9038  
VDAR Traveler 170  
Eileenmere Diamond 41F LAR  
#+SAF Connection  
SydGen Forever Lady 4087  
TC Forefront 1205  
+KF Lady R 1081

GED	BEPD	WEPD	YEPD	SC	DOC	MILK		
+1	+2.2	+66	+107	+91	+26	+30		
BW	205 wt.	365 wt.	MARB	RE	\$W	\$B	365 Adj SC	ADG
83	829	1472	+09	+44	+48.49	+68.30	39.22	4.42

A high-performing calving-ease herd sire prospect with length and thickness. This bull has impressive individual weaning and yearling ratios of 119 and 111, respectively, from a dam with a progeny weaning ratio of 105 on four calves and a progeny yearling ratio of 109 on two head.

## 15 *Kramers Image Maker 347*

Birth Date: 2-15-2013 Bull #17615738 Tattoo: 347

#+HA Image Maker 0415  
+LAR Image Maker 64 211U  
Eileenmere Diamond 161 LAR  
HD 50K  
#+SAV Bismarck 5682 [RDF]  
+Kramers Forever Lady 945  
+Birks Forever Lady 110

#Hero 6267 of RR 2418  
HA Rito Blackcap 9038  
VDAR Traveler 170  
Eileenmere Diamond 41F LAR  
#+GAR Grid Maker  
SAV Abigale 0451  
#+GDAR SVF Traveler 234D  
B&M Forever Lady 294

GED	BEPD	WEPD	YEPD	SC	DOC	MILK		
+10	+2.2	+69	+111	+68	+13	+29		
BW	205 wt.	365 wt.	MARB	RE	\$W	\$B	365 Adj SC	ADG
78	718	1331	+37	+77	+51.29	+74.58	37.88	4.24

A maternal brother to the \$10,000 top-selling bull of the 2013 Illinois Performance-Tested Bull Sale to Medina Valley Angus of Illinois.

This bull has individual weaning and yearling ratios of 103 and 101, respectively, from a dam who is considered a model Angus cow with a progeny birth ratio of 93 combined with progeny weaning and yearling ratios of 111 and 109, respectively, on two head.

## 16 *Kramers Image Maker 276* [DDP]

Birth Date: 9-18-2012 Bull #17591105 Tattoo: 276

#+HA Image Maker 0415  
+LAR Image Maker 64 211U  
Eileenmere Diamond 161 LAR  
HD 50K  
#+SAF Strategy 9015  
KF Evergreen Erica 1357  
#KF Evergreen Erica 1165

#Hero 6267 of RR 2418  
HA Rito Blackcap 9038  
VDAR Traveler 170  
Eileenmere Diamond 41F LAR  
#SAF Focus of ER  
+SAF Royal Queen 5084  
Bushs Deadline  
KF Evergreen Erica 1018

GED	BEPD	WEPD	YEPD	SC	DOC	MILK		
+7	+2.4	+63	+98	+1.64	+7	+24		
BW	205 wt.	365 wt.	MARB	RE	\$W	\$B	365 Adj SC	ADG
80	772	1356	-.02	+20	+43.68	+55.93	41.68	N/A

A fall yearling bull with excellent type and the ability to cover a large number of cows. This bull records an individual weaning ratio of 105, by the Kramer sire, LAR Image Maker 64 211U, produced as the first calf from a dam by SAF Strategy 9015. The grandam is a Pathfinder Dam.



KRAMERS EVERGREEN ERICA 2325 - Maternal sister to Lot 13.

## 17 *Kramers Image Maker 281*

Birth Date: 9-23-2012 Bull #17583997 Tattoo: 281

#+HA Image Maker 0415  
+LAR Image Maker 64 211U  
Eileenmere Diamond 161 LAR  
HD 50K  
#Boyd On Target 1083  
+WCC Primrose T17  
WCC Primrose L357

#Hero 6267 of RR 2418  
HA Rito Blackcap 9038  
VDAR Traveler 170  
Eileenmere Diamond 41F LAR  
#+SAF 598 Bando 5175  
+Boyd Forever Lady 7095  
#GAR Precision 1680  
+WCC Primrose I503

GED	BEPD	WEPD	YEPD	SC	DOC	MILK		
-5	+4.3	+66	+115	+1.25	+4	+29		
BW	205 wt.	365 wt.	MARB	RE	\$W	\$B	365 Adj SC	ADG
85	852	1585	+20	+48	+38.45	+75.14	39.74	N/A

The heaviest yearling weight bull ever recorded at Kramer Angus. This high-performance, long bodied, stout made bull has individual weaning and yearling ratios of 116 and 118, respectively, from a dam with a progeny weaning ratio of 111 on three calves and a progeny yearling ratio of 109 on two head, from the Primrose family that produced N Bar Emulation EXT.

## 18 *Kramers Image Maker 282*

Birth Date: 9-26-2012 Bull #17583996 Tattoo: 282

#+HA Image Maker 0415  
+LAR Image Maker 64 211U  
Eileenmere Diamond 161 LAR  
HD 50K  
Connealy Final Product  
Dameron Lucy 9139  
HD Dunn Lucy 0503

#Hero 6267 of RR 2418  
HA Rito Blackcap 9038  
VDAR Traveler 170  
Eileenmere Diamond 41F LAR  
Connealy Product 568  
#Ebonista of Conanga 471  
Leachman Good News  
#Shoshone Lucy 863

GED	BEPD	WEPD	YEPD	SC	DOC	MILK		
+4	+1.9	+55	+92	+1.06	+21	+27		
BW	205 wt.	365 wt.	MARB	RE	\$W	\$B	365 Adj SC	ADG
72	698	1308	+11	+34	+36.74	+63.27	36.53	N/A

An excellent herd sire prospect for both cows and heifers, by the Kramer featured sire, LAR Image Maker 64 211U.

The dam is by the popular ABS Global sire, Connealy Final Product, and the third dam is a Pathfinder Dam.



LAR IMAGE MAKER 64 211U - Featuring his progeny.

# KRAMER ANGUS BULLS



- 2013 Kramer National Western Second-Prize Pen of Bulls

## 19 Kollwood Image Maker 3142

Birth Date: 3-5-2013 Bull 17736100 Tattoo: 3142

HD 50K  
 #+HA Image Maker 0415  
 #Kramers Care Taker 704  
 +Birks Forever Lady 110  
 SAV Pioneer 7301  
 Kollwood Tiffany 142  
 +ACF Tiffany 1039  
 #Hero 6267 of RR 2418  
 HA Rito Blackcap 9038  
 #+GDAR SVF Traveler 234D  
 B&M Forever Lady 294  
 #SAV Final Answer 0035 [RDF]  
 SAV Blackbird 5297  
 #JLB Exacto 416  
 B/R Ruby of Tiffany 5113

GED	BE PD	WE PD	YE PD	SC	DOC	MILK
+3	+2.0	+59	+97	+59	+13	+33
I+6	I+2.2	I+47	I+87	I+76	I+6	I+28

BW	205 wt.	365 wt.	MARB	RE	\$W	\$B	365 Adj SC	ADG
N/A	N/A	N/A	+45	+60	+41.89	+80.61	N/A	N/A
N/A	N/A	N/A	I+46	I+77	+31.81	+75.77	N/A	N/A

This March bull blends the herd sire producing Ruby of Tiffany and Forever Lady families. This bull is sired by a son of the Pathfinder Sire, HA Image Maker 0415, from a dam by the proven sire SAV Pioneer 7301.

## 20 Kramers Evergreen Eric 363 [DDP]

Birth Date: 3-16-2013 Bull 17615742 Tattoo: 363

HD 50K  
 #SAV Net Worth 4200  
 Kramers Network 802  
 KF Evergreen Erica 1359  
 #+B/R New Frontier 095  
 #+Kramers Evergreen Erica 1553  
 #KF Evergreen Erica 928  
 #SAV 8180 Traveler 004 [RDF]  
 +SAV May 2410  
 KF Traveler 043-320  
 KF Evergreen Erica 973  
 #B/R New Design 036  
 White Fence Pride H1  
 #TC Divident 963 [RDF]  
 KF Evergreen Erica 859

GED	BE PD	WE PD	YE PD	SC	DOC	MILK
+3	+3.2	+53	+89	+88	+15	+26

BW	205 wt.	365 wt.	MARB	RE	\$W	\$B	365 Adj SC	ADG
82	784	1405	+61	+14	+35.82	+76.03	39.28	4.30

The best son to date of the \$25,000 Kramers Network 802. This bull has individual weaning and yearling ratios of 113 and 107, respectively, from a Pathfinder Dam who combines a progeny birth ratio of 96 with a progeny weaning ratio of 103 on five calves. A flush sister to the dam of this bull produced Kramers Factory Direct 211, the \$16,000 top-selling Lot 1 bull of the 2013 Kramer Sale.



TC CUPCAKE 03Y - The dam of Lot 24.

## 21 Stuckemeyers Networth 1302

Birth Date: 2-10-2013 Cow 17691962 Tattoo: 1302

#SAV Net Worth 4200  
 KRAMERS Net Worth 858  
 KF Erica 1064  
 HD 50K  
 #+Lemmon Newsline C804  
 Kramers Queen Ann 336  
 #+CCL Queen Ann 30N  
 #SAV 8180 Traveler 004 [RDF]  
 +SAV May 2410  
 #Bushs Flashback 880  
 #KF Erica 906  
 #B/R New Design 036  
 White Fence Pride H1  
 #+Hyline SVF Rito 1116  
 Queen Ann of SVF 70C

GED	BE PD	WE PD	YE PD	SC	DOC	MILK
I+4	I+3.1	I+44	I+73	N/A	N/A	I+28

BW	205 wt.	365 wt.	MARB	RE	\$W	\$B	365 Adj SC	ADG
N/A	N/A	N/A	N/A	N/A	+29.83	N/A	N/A	N/A

This grandson of the Pathfinder Sire, SAV Net Worth 4200, from the Stuckemeyer family, carries on the noted Queen Ann calving-ease family. The dam of this bull has a progeny birth ratio of 93 combined with a progeny weaning ratio of 106 on one calf and the grandam is a Pathfinder Dam.

## 22 Kramers Brilliance 360

Birth Date: 3-10-2013 Bull 17615737 Tattoo: 360

HD 50K  
 SAV Brilliance 8077  
 Kramers Brilliance 014  
 +SK Patton Forever Lady 501  
 Woodhill Mainline  
 Bear Mtn Entense 1053  
 Bear Mtn Entense 8314  
 #+SAV Bismarck 5682 [RDF]  
 SAV Blackcap May 5270  
 #N Bar Emulation EXT  
 +Bear MTN Forever Lady 601  
 #Connealy Danny Boy  
 #Woodhill Blackbird 1288-138K  
 +GAR-EGL Protege  
 +Brookefield Entense 6214

GED	BE PD	WE PD	YE PD	SC	DOC	MILK
+8	+7	+59	+101	+19	+10	+25

BW	205 wt.	365 wt.	MARB	RE	\$W	\$B	365 Adj SC	ADG
70	707	1312	+43	+73	+39.03	+91.93	37.61	4.20

This attractive and correct calving-ease herd sire prospect is sired by a son of the popular ABS Global sire, SAV Brilliance 8077. This bull balances an individual birth ratio of 97 with an individual weaning ratio of 102 as the first calf from a dam by Woodhill Mainline.

This bull is a product of the Everelda Entense family.

## 23 Kramers New Biz 353

Birth Date: 2-25-2013 Bull 17615741 Tattoo: 353

HD 50K  
 #+SAV Bismarck 5682 [RDF]  
 Kramers New Biz 921  
 #Kramers Barbara Beauty 1516  
 KF New Design 464  
 KF Barbara Beauty 1493  
 +KF Barbara Beauty 1097  
 #+GAR Grid Maker  
 SAV Abigale 0451  
 #+Boyd New Day 8005  
 #KF Barbara Beauty 1120  
 #Bon View New Design 878  
 #KF Evergreen Erica 1252  
 #DHD Traveler 6807  
 KF Barbara Beauty

GED	BE PD	WE PD	YE PD	SC	DOC	MILK
+15	-1.1	+48	+83	+1.41	-11	+27

BW	205 wt.	365 wt.	MARB	RE	\$W	\$B	365 Adj SC	ADG
65	688	1299	+62	+40	+44.59	+67.95	42.67	4.23

The only bull in this offering by the Kramer sale-topper, Kramers New Biz 921. This great looking, calving-ease bull has a modest individual birth ratio of 82, from a dam with a progeny birth ratio of 93 coupled with a progeny weaning ratio of 106 on seven calves.

## 24 MLK Red Bull 335

Birth Date: 2-1-2013 Bull 1593289 Tattoo: 335

Red SVR Gangster 14S (AME,MAE,OSF)  
 Red Northline Fat Tony 605U (AME,MAE,OSF)  
 1299911 Red Northline Ruby 0305N  
 HD 50K  
 3 Aces Sideways (OSF)  
 TC Cupcake 03Y  
 1424393 Meado-West Luanna (OSF)  
 Red Geis Hi Ho 180'04  
 Red Dwajo Duchess 75M  
 Red Northline Rob Roy 122K (MAE,OSF)  
 Red Northline Ruby 305K  
 BUF CRD Hobo 1961 (MAE,OSF)  
 Trowbridge Lana 707 (OSF)  
 Meado-West Jazz  
 Meado-West Blanche

CEPD	BE PD	WE PD	YE PD	MILK	TM	ME	BW	205 wt.	365 wt.
3	0.1	51	80	14	40	-4	80		

HPG	CEM	STAY	MARB	YG	CW	REA	FAT
10	5	9	0.2	0.02	18	0.09	0.01

This Red Angus bull is by a popular Canadian sire noted for added thickness and muscle. The dam of this bull was the 2012 Illinois State Fair Grand Champion Red Angus Female and the 2013 National Western Junior Show Reserve Grand Champion Red Angus Female. Birth weight 80 pounds, 205-day weight 650 pounds, 365-day weight 1200 pounds.

# KRAMER ANGUS FEMALES



KRAMERS FOREVER LADY 304 - Lot 25

## 25 *Kramers Forever Lady 304*

Birth Date: 1-3-2013 Cow 17615747 Tattoo: 304

Vin-Mar O'Reilly Factor  
#SAV Final Answer 0035 [RDF]  
#Vin-Mar Edella 2827

KFKAF Forever Lady 1550  
#G 13 Structure  
KF Forever Lady 1458

#Sitz Traveler 8180  
SAV Emulous 8145  
+Circle A 216 LTD 9374  
RR Edella Pursuit 5827  
#TC Stockman 365  
#G 13 Traveler 9428  
#Bon View New Design 878  
+Birks Forever Lady 110

CED	BEPD	WEPD	YEPD	SC	DOC	MILK
+8	+1.8	+51	+94	I+.41	I+20	+26

A top-notch show heifer prospect from the Forever Lady family, sired by the popular Vin-Mar O'Reilly Factor.

This January heifer is from a dam who combines a progeny birth ratio of 98 with a progeny weaning ratio of 103 on four calves, tracing to the high income-producing Kramer foundation donor, Birks Forever Lady 110.

MARB	RE	SW	SB
I+.32	I+.45	+33.45	+70.74

## 26 *Kramers LD Forever Lady 1304*

Birth Date: 2-18-2013 Cow 17691959 Tattoo: 1304

KRAMERS Net Worth 858  
#SAV Net Worth 4200  
KF Erica 1064

+KF Forever Lady 1465  
#B/R New Frontier 095  
+Birks Forever Lady 110

#SAV 8180 Traveler 004 [RDF]  
+SAV May 2410  
#Bushs Flashback 880  
#KF Erica 906  
#B/R New Design 036  
White Fence Pride H1  
#+GDAR SVF Traveler 234D  
B&M Forever Lady 294

CED	BEPD	WEPD	YEPD	SC	DOC	MILK
I+4	I+2.9	I+52	I+90	I+.94	N/A	I+28

Owned with Little D Cattle Company.  
This halter-broke show heifer prospect is also bred to make an outstanding cow, stemming from the Kramer foundation donor, Birks Forever Lady 110.

The dam of this heifer has a progeny birth ratio of 88 combined with progeny weaning and yearling ratios of 111 and 109, respectively, and progeny IMF and ribeye ratios of 133 and 116, respectively, on one calf.

MARB	RE	SW	SB
I+.70	I+.57	+31.52	+93.08

## 27 *Kramers Blackcap May 326*

Birth Date: 1-25-2013 Cow +17716388 Tattoo: 326

+SAV Angus Valley 1867  
SAV Iron Mountain 8066  
#+SAV May 2397

SAV Blackcap May 1038  
#SAV Final Answer 0035 [RDF]  
SAV Blackcap May 9344

#TC Gridiron 258  
SAV Madame Pride 3249  
#+SAF 598 Bando 5175  
SAV May 7238  
#Sitz Traveler 8180  
SAV Emulous 8145  
#+SAV Bismarck 5682 [RDF]  
SAV Blackcap May 4136

CED	BEPD	WEPD	YEPD	SC	DOC	MILK
I+9	I+1.3	I+63	I+109	N/A	N/A	I+24

A full sister to the \$10,000 top-selling lot of the 2013 Kramer Fall Online Sale to Kiesewetter Angus.

This tremendous breeding piece is from the first calf crop by the \$200,000 Genex/CRI sire, SAV Angus Valley 1867, from an outstanding young donor dam backed by the popular and proven sires, SAV Final Answer 0035 and SAV Bismarck 5682, who have both led the breed for annual registrations.

The grandam is a maternal sister to SAV Resource 1441, SAV Renown 3439, SAV Recharge 3436 and a long line of other notable individuals, stemming from SAV Blackcap May 4136.



SAV BLACKCAP MAY 4136 - The famous third dam of Lot 27.

# KRAMER ANGUS FEMALES



KRAMERS FULL FACTOR 206 - Maternal brother to Lot 28.

## 28 *Kramers Marie 310*

Birth Date: 1-7-2013 Cow 17615753 Tattoo: 310

Connealy Consensus  
Connealy Consensus 7229  
Blue Lilly of Conanga 16

#SAV 8180 Traveler 004 [RDF]  
Kramers Evergreen Marie 1556  
FFF Evergreen Marie D01

#KMK Alliance 6595 I87  
Blinda of Conanga 004  
#Woodhill Admiral 77K  
Blue Cash of Conanga 6020  
#Sitz Traveler 8180  
+Boyd Forever Lady 8003  
KF Precision 361  
#Fairview Miss Marie 6065

CED	BEPD	WEPD	YEPD	SC	DOC	MILK
+8	+5	+59	+97	I+.88	I+12	+27

MARB	RE	SW	SB
I+.60	I+.48	+41.21	+92.09

A maternal sister to Kramers Full Factor 206, who was selected by Top Line Farm as a feature of the 2013 Kramer Sale, after being a member of the 2013 Kramer National Western Second-Prize Pen of Bulls.

This daughter of Connealy Consensus 7229 has an individual birth ratio of 94 combined with an individual weaning ratio of 106, from a dam with a progeny birth ratio of 91 combined with a progeny weaning ratio of 101 on five calves.

## 29 *Kramers Elba 305*

Birth Date: 1-3-2013 Cow 17610513 Tattoo: 305

Connealy Consensus  
Connealy Consensus 7229  
Blue Lilly of Conanga 16

#Connealy Onward  
Kramers Elba 1565  
KF Elba 1407

#KMK Alliance 6595 I87  
Blinda of Conanga 004  
#Woodhill Admiral 77K  
Blue Cash of Conanga 6020  
#Connealy Lead On  
AltC of Conanga 6104  
#TC Freedom 104  
Callans Elba Meg 1628

CED	BEPD	WEPD	YEPD	SC	DOC	MILK
+10	+8	+58	+101	N/A	N/A	+29

MARB	RE	SW	SB
N/A	N/A	+37.75	N/A

This high quality heifer offers an attractive EPD profile, sired by Connealy Consensus 7229, from a dam by Connealy Onward.

This heifer from the noted Elba family has two maternal sisters who post a collective progeny weaning ratio of 102.

## 30 *Kramers Barbara Beauty 316*

Birth Date: 1-18-2013 Cow 17615746 Tattoo: 316

Connealy Consensus  
Connealy Consensus 7229  
Blue Lilly of Conanga 16

#Boyd New Day 8005  
#Kramers Barbara Beauty 1516  
#KF Barbara Beauty 1120

#KMK Alliance 6595 I87  
Blinda of Conanga 004  
#Woodhill Admiral 77K  
Blue Cash of Conanga 6020  
#AAR New Trend  
SVF Forever Lady 57D  
Bushs Deadline  
KF Barbara Beauty

CED	BEPD	WEPD	YEPD	SC	DOC	MILK
+10	+6	+50	+89	I+.98	I+11	+31

MARB	RE	SW	SB
I+.48	I+.70	+36.78	+87.21

A moderate-framed, easy-fleshing great cow prospect by the \$210,000 Connealy Consensus 7229.

The second-generation Pathfinder Dam of this heifer

has a progeny birth ratio of 89 combined with a progeny weaning ratio of 103 on six calves.

A maternal brother, Kramers New Biz 921, was the \$9,000 top-selling bull of the 2010 Kramer Sale to JP Farms.

## 31 *Kramers Eileen 340*

Birth Date: 2-9-2013 Cow 17615750 Tattoo: 340

#HA Image Maker 0415  
+LAR Image Maker 64 211U  
Eileenmere Diamond 161 LAR

Schurr 77 527 2063  
Eileens Copeland 513U LAR  
Eileens Copland 791S LAR

#Hero 6267 of RR 2418  
HA Rito Blackcap 9038  
VDAR Traveler 170  
Eileenmere Diamond 41F LAR  
Apex Advantage 527  
Marcys 95 Ethelda E15  
#HARB Windy 702 JH  
Eileens Copeland 671P LAR

CED	BEPD	WEPD	YEPD	SC	DOC	MILK
+8	+2.0	+56	+95	I+1.28	I+17	+25

MARB	RE	SW	SB
I+.17	I+.15	+38.04	+57.60

A promising young heifer backed by outcross genetics by the Kramer sire, LAR Image Maker 64 211U, backed by generations of breeding from the Littaus herd in South Dakota.

## 32 *Kramers Forever Lady 350*

Birth Date: 2-19-2013 Cow 17615752 Tattoo: 350

#HA Image Maker 0415  
+LAR Image Maker 64 211U  
Eileenmere Diamond 161 LAR

#GAR Integrity  
+Kramers Forever Lady 1531  
+Birks Forever Lady 110

#Hero 6267 of RR 2418  
HA Rito Blackcap 9038  
VDAR Traveler 170  
Eileenmere Diamond 41F LAR  
#Bon View New Design 1407  
GAR Precision 1019  
#+GDAR SVF Traveler 234D  
B&M Forever Lady 294

CED	BEPD	WEPD	YEPD	SC	DOC	MILK
+3	+3.5	+55	+90	I+.81	I+15	+25

MARB	RE	SW	SB
I+.33	I+.49	+34.90	+68.13

This thick, correct heifer is a maternal sister to a female who sold for \$2,100 to Brady Kramer and went on to raise a \$5,100 bull in the 2013 Illinois Performance-Tested Bull Sale.

## 33 *Kramers Elba 338*

Birth Date: 2-7-2013 Cow 17615756 Tattoo: 338

#SAV Final Answer 0035 [RDF]  
Kramers Answer 932  
Werner Empress 817

#SAV Bismarck 5682 [RDF]  
Kramers Elba 125  
Kramers Elba 1565

#Sitz Traveler 8180  
SAV Emulous 8145  
#+Woodhill Foresight  
Shermans Empress 410  
#+GAR Grid Maker  
SAV Abigale 0451  
#Connealy Onward  
KF Elba 1407

CED	BEPD	WEPD	YEPD	SC	DOC	MILK
+11	+6	+63	+104	N/A	N/A	+26

MARB	RE	SW	SB
N/A	N/A	+40.93	N/A

A great combination of quality, pedigree and EPDs, sired by Kramers Answer 932, backed by SAV Final Answer 0035 and SAV Bismarck 5682.

## 34 *Kramers Evergreen Erica 376*

Birth Date: 9-12-2013 Cow 17696860 Tattoo: 376

SAV Brilliance 8077  
Kramers Brilliance 014  
+SK Patton Forever Lady 501

KF Precision 358  
TTT Evergreen Erica 1289  
KF Evergreen Erica M958

#+SAV Bismarck 5682 [RDF]  
SAV Blackcap May 5270  
#N Bar Emulation EXT  
+Bear MTN Forever Lady 601  
#Twin Valley Precision E161 [RDF]  
KF Evergreen Erica 1018  
#+OSU 6T6 Ultra  
KF Evergreen Erica 778

CED	BEPD	WEPD	YEPD	SC	DOC	MILK
I+7	I+2.4	I+40	I+74	I+.69	I+7	I+23

MARB	RE	SW	SB
I+.21	I+.46	+23.90	+65.53

An excellent show heifer and brood cow prospect from the timeless Evergreen Erica family.

## 35 *Kramers Blackcap 392*

Birth Date: 11-4-2013 Cow 17736855 Tattoo: 392

#+SAV Bismarck 5682 [RDF]  
+OSU Beyond 0182  
+OSU Empress 4123

Schurrtop X864 H473  
Rra Blackcap 9986  
TCC Black Cap 3447

#+GAR Grid Maker  
SAV Abigale 0451  
#+Northern Improvement 4480 GF  
+OSU 2928 Empress 4177  
Schurrtop Commander X864  
Schurrtop 527 X956  
WK New Design 1515  
TCC Blackcap 8371

CED	BEPD	WEPD	YEPD	SC	DOC	MILK
I+7	I+1.8	I+47	I+85	N/A	N/A	I+26

MARB	RE	SW	SB
N/A	N/A	+30.78	N/A

This November show heifer prospect is attractive and very complete in her makeup, by the Kramer sire OSU Beyond 0182, from a dam with a progeny weaning ratio of 105 on two calves.

# KRAMER ANGUS FEMALES

## 36 *Kramers Forever Lady 387*

Birth Date: 10-4-2013 Cow +17738112 Tattoo: 387

SAV Heritage 6295 #CAR Duke 104  
 SAV Harvester 0338 SAV Blackcap May 4136  
 +SAV Emblynette 7749 #SAV Net Worth 4200  
 #Summitcrest High Prime 0H29 #Sav Emblynette Diamond 6377  
 #Kf Forever Lady 1456 #Gardens Prime Time  
 +Birks Forever Lady 110 Summitcrest Missie 2F55  
 #+GDAR SVF Traveler 234D  
 B&M Forever Lady 294

CED	BEPD	WEPD	YEPD	SC	DOC	MILK
I-6	I+4.7	I+64	I+118	I+.70	I+23	I+30

This major league show heifer prospect, produced in the embryo program, is described as deep, wide and complete with a feminine front, sired by the \$275,000 SAV Harvester 0338, who ranks as the breed's top Yearling Weight EPD sire.

This heifer is a maternal sister to both the 2012 DuQuoin State Fair Spring Champion Bull, Kramers Captain 177, and to the DaEsRo herd sire, Kramers Network 074, from a dam with a progeny weaning ratio of 103 on five calves and a progeny yearling ratio of 104 on four head.

## 37 *Kramers Forever Lady 2002*

Birth Date: 9-7-2012 Cow +17511010 Tattoo: 2002

Connealy Final Product Connealy Product 568  
 MCATL Pure Product 903-55 #Ebonista of Conanga 471  
 MA Esta 55-252 #WAR Alliance 9126 6006  
 #N Bar Emulation EXT RA Esta R243  
 #SK Patton Forever Lady 501 #Emulation N Bar 5522  
 +Bear MTN Forever Lady 601 N Bar Primrose 2424  
 #Papa Equator 2928  
 #Blackcap Lady 384 GDAR

CED	BEPD	WEPD	YEPD	SC	DOC	MILK
I-1	I+2.6	I+57	I+102	I+.44	I-12	I-30

A product of the embryo program by MCATL Pure Product 903-55, from a donor dam who combines a progeny birth ratio of 95 with a progeny weaning ratio of 104 on four natural calves and a progeny yearling ratio of 112 on one head along with a progeny IMF ratio of 117 on five head.

The dam of this female is a sister to a number of major champions, stemming from Bear Mtn Forever Lady 601. Bred to calve November 4, 2014 to BEAR MTN RENEGADE.

## 38 *Kramers Forever Lady 254*

Birth Date: 3-26-2012 Cow 17330616 Tattoo: 254

OCC Headliner 661H #+OCC Emblazon 854E  
 #OCC Missing Link 830M #+OCC Juanada 858F  
 +OCC Dixie Erica 946K #OCC Glory 950G  
 #Sitz Upward 307R +OCC Dixie Erica 816B  
 #Kramers Forever Lady 738 #Connealy Onward  
 +Birks Forever Lady 110 Sitz Henrietta Pride 81M  
 #+GDAR SVF Traveler 234D  
 B&M Forever Lady 294

CED	BEPD	WEPD	YEPD	SC	DOC	MILK
+9	+2	+51	+91	N/A	N/A	+29

A donor quality bred heifer by the proven sire OCC Missing Link 830M, from one of the favorite cows at Kramer Angus.

This female blends the time-tested Forever Lady and Dixie Erica families. Bred to calve September 6, 2014 to SOO LINE MOTIVE 9016.

## 39 *Kramers Evergreen Erica 204*

Birth Date: 1-3-2012 Cow 17325501 Tattoo: 204

Connealy Product 568 #GAR Retail Product  
 Connealy Final Product Pride Fine of Conanga 566  
 #Ebonista of Conanga 471 #Connealy Deep Canyon 454  
 #+Boyd New Day 8005 #AAR New Trend  
 #Kf Evergreen Erica 1457 SVF Forever Lady 57D  
 Kf Evergreen Erica 973 #Hoff Hi Flyer SC 7134  
 Kf Evergreen Erica 591

CED	BEPD	WEPD	YEPD	SC	DOC	MILK
+6	+1	+58	+99	I+.73	I+10	+29

A maternal sister to Kramers Evergreen Erica 121, the featured Lot 1 heifer of the 2011 Kramer Fall Sale to Turner Angus.

This daughter of Connealy Final Product has an individual birth ratio of 94 combined with an individual weaning ratio of 105, from the same branch of the Evergreen Erica family that also produced Kramers Network 802, KF Precision 361 and Kramers Connection 809. Bred to calve April 2014 to BEAR MTN RENEGADE. Examined safe.



KRAMERS CAPTAIN 177 - Maternal brother to Lot 36.

## 40 *Kramers Barbara Beauty 205* [DDP]

Birth Date: 1-4-2012 Cow 17317146 Tattoo: 205

#SAV Final Answer 0035 [RDF] #Sitz Traveler 8180  
 Kramers Answer 932 SAV Emulous 8145  
 Werner Empress 817 #+Woodhill Foresight  
 Kramers Network 802 #SAV Net Worth 4200  
 Kramers Barbara Beauty 034 KF Evergreen Erica 1359  
 #Kramers Barbara Beauty 1516 #+Boyd New Day 8005  
 #KF Barbara Beauty 1120

CED	BEPD	WEPD	YEPD	SC	DOC	MILK
+7	+1.0	+63	+101	I+1.44	I+8	+27

This bred heifer by Kramers Answer 932 combines an individual birth ratio of 96 with an individual weaning ratio of 103.

This elite EPD female is from a dam with a progeny birth ratio of 88 combined with a progeny weaning ratio of 105 on two calves and stems from a grandam who is a second-generation Pathfinder Dam.

Bred to calve October 2014 to BEAR MTN RENEGADE.

## 41 *Kramers Evergreen Erica 157* [DDP]

Birth Date: 5-9-2011 Cow 17072537 Tattoo: 157

#+HA Image Maker 0415 #Hero 6267 of RR 2418  
 +LAR Image Maker 64 211U HA Rito Blackcap 9038  
 Eileenmere Diamond 161 LAR V DAR Traveler 170  
 Eileenmere Diamond 41F LAR  
 #Bushs Flashback 880 #TC Dividend 963 [RDF]  
 KF Evergreen Erica 1057 BA Sara Gal 516  
 KF Evergreen Erica 879 KF Rainbo 169  
 KF Evergreen Erica 750

CED	BEPD	WEPD	YEPD	SC	DOC	MILK
+4	+2.2	+46	+74	I+1.10	I+17	+24

A young cow by the Kramer outcross sire, LAR Image Maker 64 211U, from the time-tested Evergreen Erica family.

This female is from a dam by the Kramer sire, Bushs Flashback 880.

Bred to calve October 2014 to BEAR MTN RENEGADE.



KRAMERS EVERGREEN ERICA 121 - Maternal sister to Lot 39.



Sale Managers  
TOM BURKE, KURT SCHAFF, JEREMY HAAG

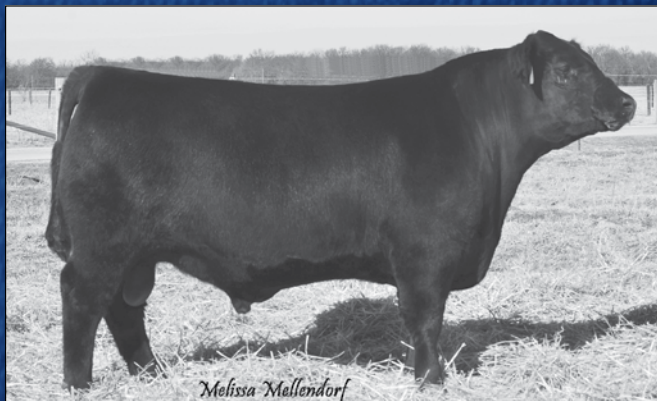
AMERICAN ANGUS HALL OF FAME  
at the WORLD ANGUS HEADQUARTERS  
Box 660, Smithville, MO 64089-0660.  
Phone: (816) 532-0811  
Fax: (816) 532-0851  
E-mail [angushall@earthlink.net](mailto:angushall@earthlink.net)  
[www.angushall.com](http://www.angushall.com)

**PRSR**  
**FIRST CLASS**  
U.S. POSTAGE  
**PAID**  
Minster, OH  
Permit #1

## The Kramer Angus Bull Offering Sells 50K Tested



KRAMERS APOLLO 317 - Lot 10



KRAMERS POTENTIAL 311 - Lot 3



KRAMERS ONE DIRECTION 306 - Lot 4